

# Team Viewer Instructions

---

## Team Viewer Installation Instructions

1. Open your Internet Browser (e.g. Internet Explorer or Firefox)
2. In the address bar type in [www.salamandersoftware.net.nz](http://www.salamandersoftware.net.nz) and press enter
3. Click on the install Teamviewer Link as shown below



## Team Viewer Instructions

---

4. Click on the Download TeamViewer Software Link

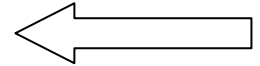
### TeamViewer

or server around the world within a few seconds. This allows us to assist with Pandora, ePandora, look at.

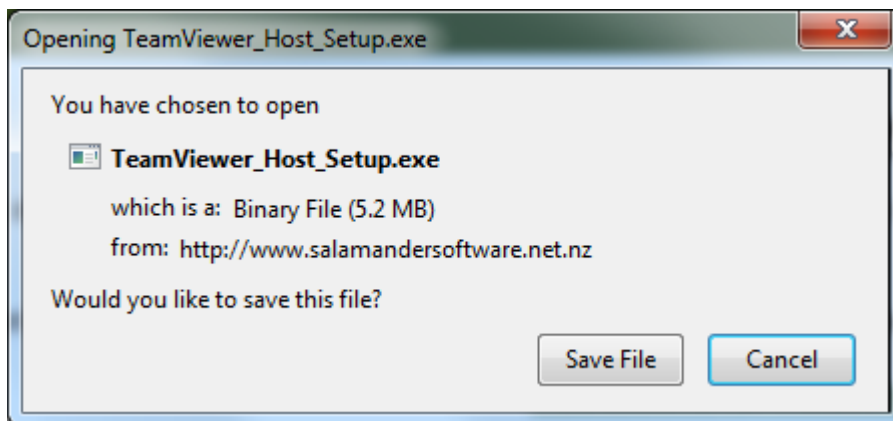
attached instructions and then click on the link to download the software we require to be install

#### Instructions for installing TeamViewer

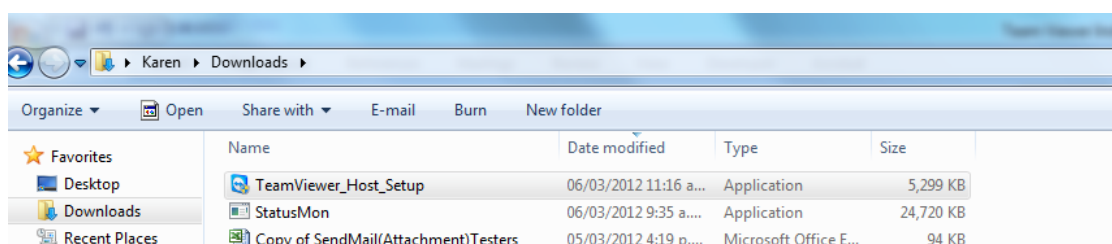
[Download TeamViewer Software](#)



5. You may be requested to save the programme please save this to a location on your computer you can access (e.g. My Documents depending on your version of Windows you may find that the file automatically saves to your Download folder) If you don't get this option click Run and continue with step 7



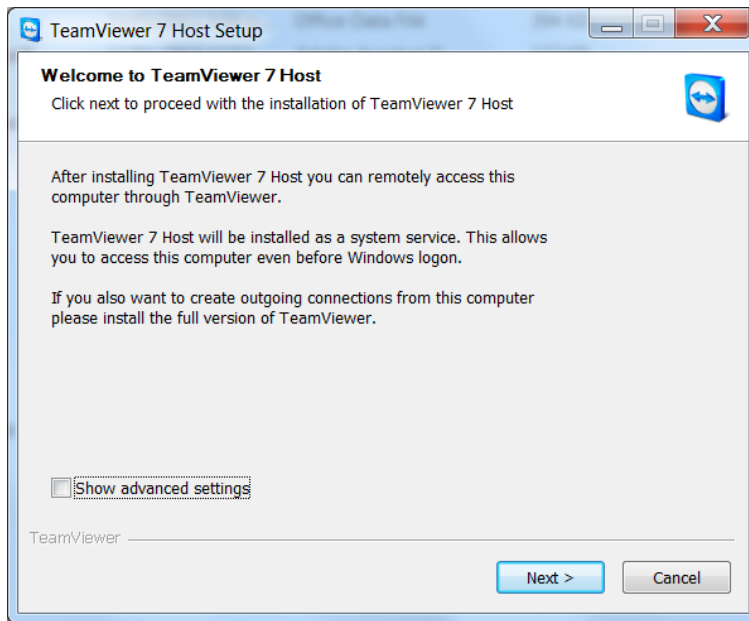
6. Go to the place you saved the file (e.g. My Documents) and double click on the TeamViewer\_Host\_Setup (you may have to press Yes to allow the application to run depending on your windows version).



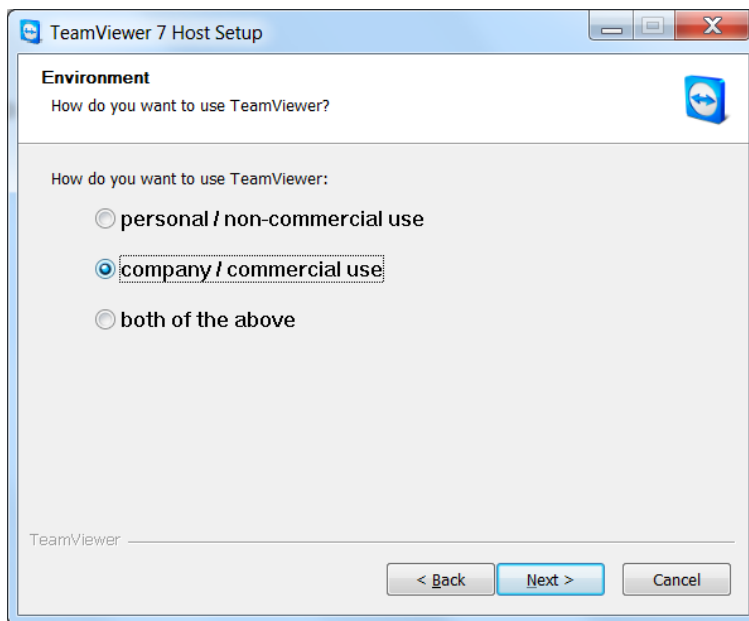
# Team Viewer Instructions

---

7. You will see the below Window Click Next

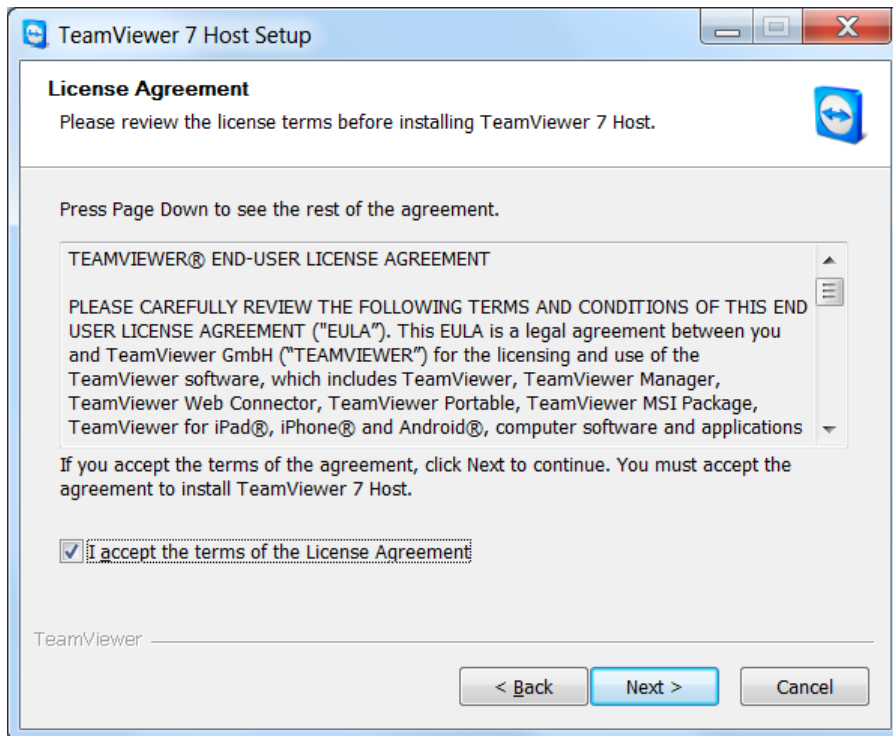


8. Click Company/Commercial use and then click Next

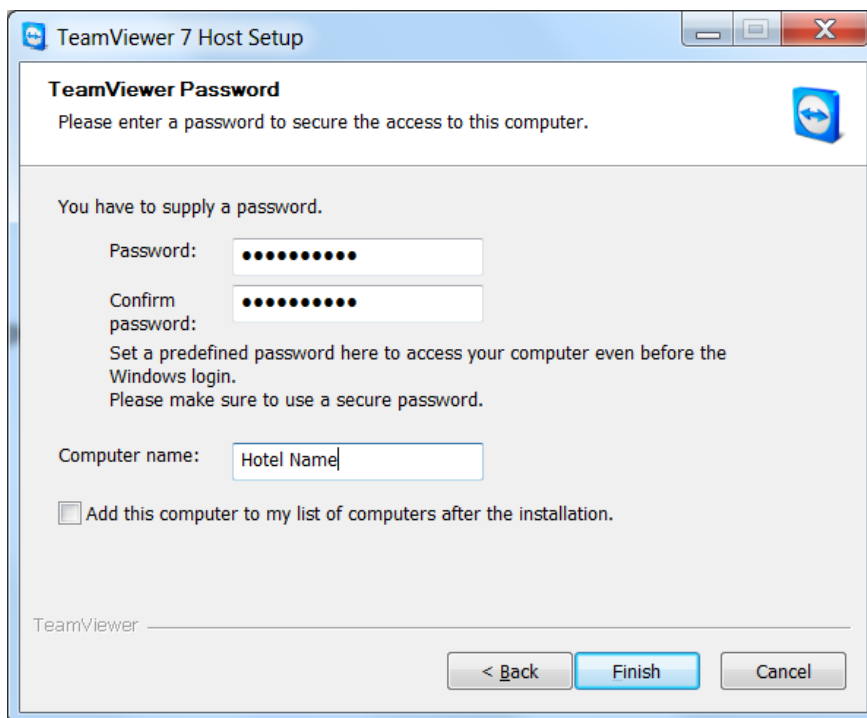


# Team Viewer Instructions

9. Accept the terms and Conditions by ticking the box and click Next



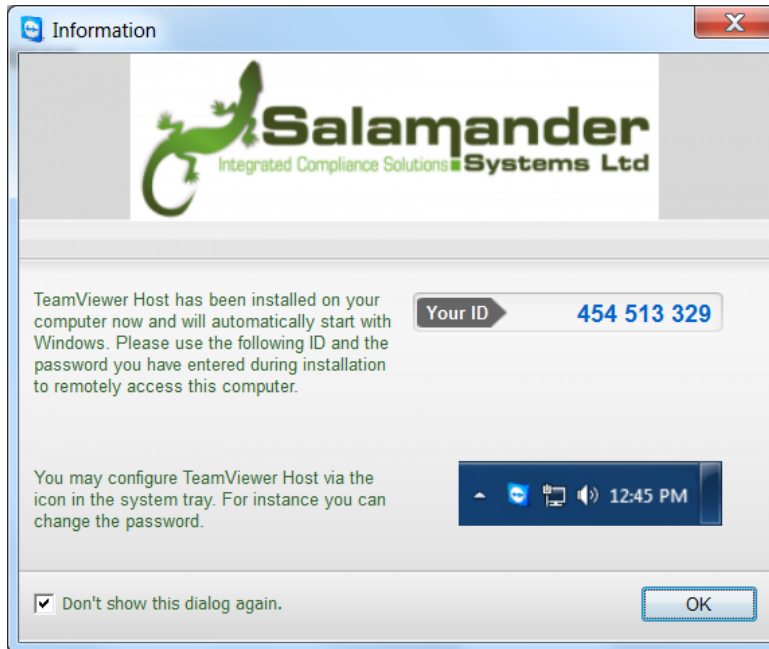
10. In the following box type salamander for the password and retype salamander in the confirm password box. In the Computer Name please enter your venue name (e.g. Homestead Tavern). Click Finish



## Team Viewer Instructions

---

11. The programme will now install, after installation the following appears



12. Note Your ID and phone Karen on either 06 842 0148 or 027 276 2055 with this ID number, you can also email this number to [Karen@salamandersoftware.net.nz](mailto:Karen@salamandersoftware.net.nz) if you prefer. Click OK to complete installation.

13. Salamander can now access your computer to assist with Pandora or ePandora or ReelView